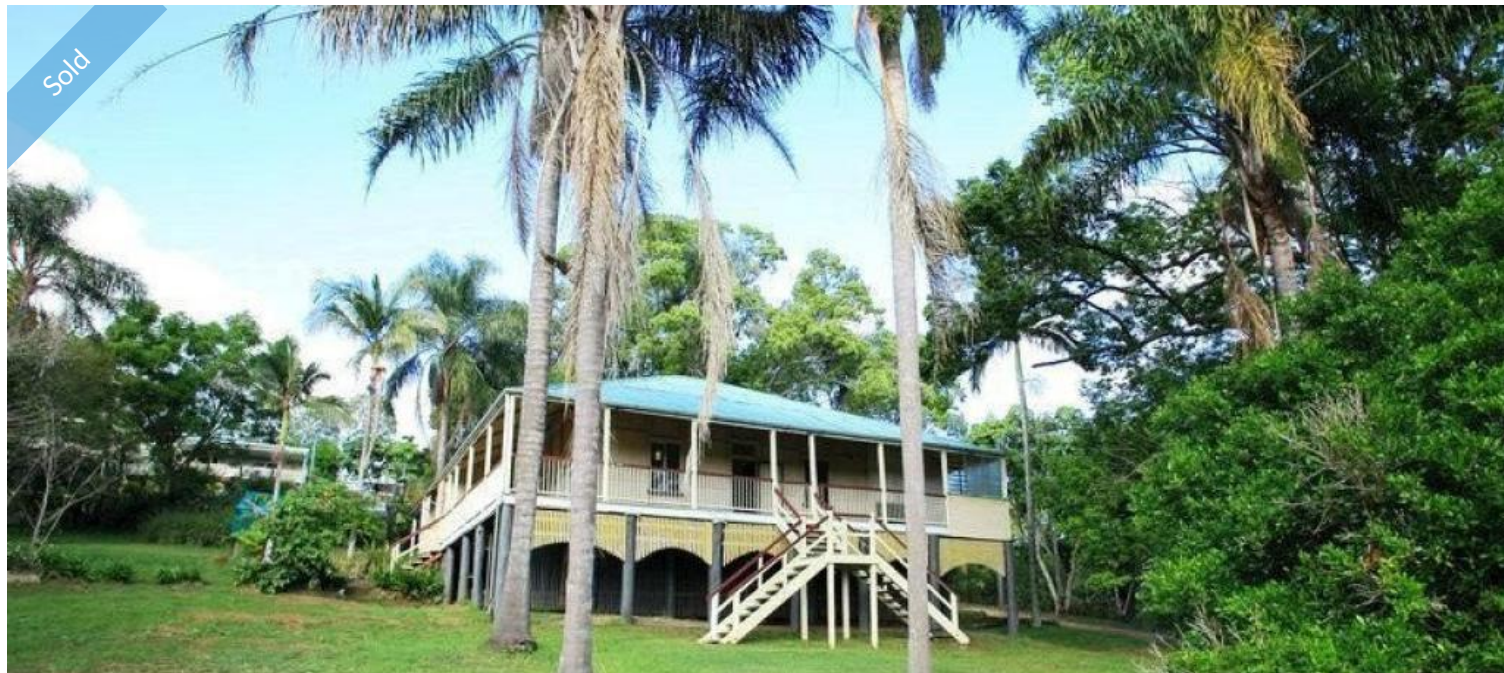


Sold



28 Yabba Rd, Imbil



IMPOSING AUSTRALIAN HOMESTEAD!

28 Yabba Rd is a large, imposing Australian homestead sited on a 2,000m² block in 3 titles. Set well back from the road, the high set homestead features butterfly stairs leading to a wide veranda on the northern and eastern sides of the home. The veranda takes full advantage of a great outlook and is accessed from inside by both living areas and the main entry hall.

The front rooms feature period trims, high timber ceilings and timber walls, while louver windows add a practical touch to the family room and kitchen at the rear. The kitchen has timber bench tops and plenty of cupboards including a large walk in pantry. There are four bedrooms and one bathroom.

No Australian homestead would be complete without a shady rear deck, and this one doesn't disappoint. Underneath has great storage space.

The homestead still needs some work - but what a great project. When it is finished, it will be grand!

(NOTE: The second home, on the fourth lot, referred to in the video has been sold).

To arrange an inspection or to seek further information, please call Ron Jeffery.

🛏 4 🚿 1 📏 2,016 m²

| | |
|----------------------|----------------------|
| Price | SOLD for \$270,000 |
| Property Type | Residential |
| Property ID | 52 |
| Land Area | 2,016 m ² |

Agent Details

Ron Jeffery - 0402 223 201

Office Details

120 Yabba Rd, Imbil
07 5488 6000

7 Elizabeth St, Kenilworth
07 5446 0164



RJR Property