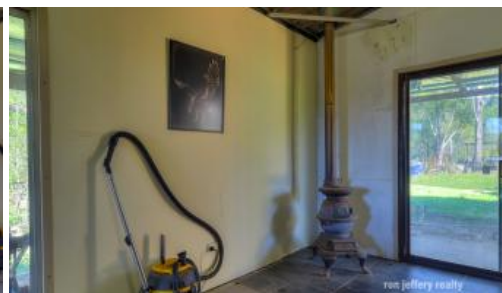


Sold



119 Ray Myers Road, Imbil



## IT'S MORE THAN JUST A BLOCK OF LAND!

The Mary Valley offers great lifestyle choices. Whether you want to live on productive acreage, in the privacy and seclusion of natural bush, or a village lifestyle ... the Mary Valley has it all.

Ray Myers Rd is primarily natural bush, just a couple of minutes out of the village of Imbil. The blocks here offer privacy and seclusion, without being remote.

Number 119 Ray Myers Rd is a 1 ha (2.5 acres) block with plenty of trees and a very large dam. There's still plenty of cleaning up to be done on the block but then it's a blank canvas.

There are two approved buildings on the block:

- The first one is a container with a roof that takes in a covered forecourt and the container. It is used as a storage shed.
- The second one is a "liveable shed", approved only as a shed. It's a 3-bay double garage that has an open plan living space with a slow combustion heater. There is a kitchen in one corner and a bedroom directly opposite. It has bathroom and laundry facilities and a covered entertaining area. The shed has mains power and good tank water storage.

The property is less than half an hour from Gympie and about 10 minutes off the new freeway, on your way to anywhere.

Inspections can be arranged by contacting the team at ron jeffery realty. With offices in both Imbil & Kenilworth, ron jeffery realty have the Mary Valley covered.

📏 1.03 ha

<b>Price</b>	SOLD for \$163,000
<b>Property Type</b>	Residential
<b>Property ID</b>	297
<b>Land Area</b>	1.03 ha

### Agent Details

Ian Naylor - 0466 341 065

### Office Details

120 Yabba Rd, Imbil  
07 5488 6000

7 Elizabeth St, Kenilworth  
07 5446 0164



**RJR Property**

This is more than just a block of land. It has a liveable shed!