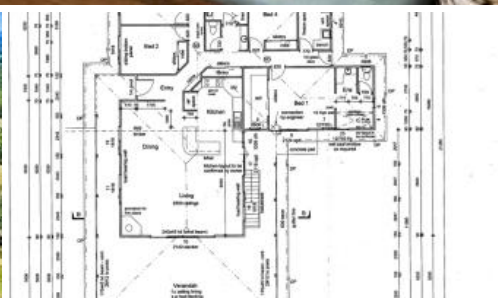


Sold



48 Michelle Ct, Imbil



KEVIERA - COMMANDING POSITION - AWESOME VIEWS!  
VENDORS ARE KEEN TO SELL AND WILL CONSIDER ALL REASONABLE OFFERS!

So much to say ..... So little space!

#### THE LOCATION:

5 minutes from Imbil, under 30 minutes from Gympie and 40 minutes from the coast at Noosa. Located at the end of a cul-de-sac road, a sealed driveway delivers you to the home and outbuildings in a commanding position with awesome views.

#### THE HOME:

Upstairs - Offers open plan living areas that include lounge and dining rooms plus a kitchen that features a 5 burner free standing gas cooker and a Caesarstone topped island bench. There are 4 double bedrooms and 2 bathrooms. A wide wrap around covered deck extends the living area.  
Downstairs - Provides a 50 m<sup>2</sup> rumpus room, with toilet facilities, and a similar sized covered area for outdoor entertaining.

#### THE VIEWS:

From the living area you have a great vista, but when you step out onto the wrap around deck you can really take in the extensive views. The upstairs covered deck is 5 m wide and the downstairs concrete entertaining area is a similar size. They both share the views!

🛏 4 🌳 2 🚗 8 📏 71,100 m<sup>2</sup>

<b>Price</b>	SOLD for \$750,000
<b>Property Type</b>	Residential
<b>Property ID</b>	110
<b>Land Area</b>	71,100 m <sup>2</sup>

#### Agent Details

Ron Jeffery - 0402 223 201

#### Office Details

120 Yabba Rd, Imbil  
07 5488 6000

7 Elizabeth St, Kenilworth  
07 5446 0164



**RJR Property**

#### THE OUTBUILDINGS:

A double carport at the house and a large separate garage providing accommodation for 8 vehicles plus workshop and storage. Solar power back to the grid is a real bonus.

#### THE LAND:

A large house yard separates two paddocks that provide a good balance of grazing land and natural bush. The 7.11 ha (17½ acre) property is watered by two dams.

#### YOUR INSPECTION:

Call the team at Ron Jeffery Realty to arrange a personal inspection!